

ATTENTION

INVASIVE SPECIES ALERT

THE ST. LAWRENCE, EASTERN LAKE ONTARIO PARTNERSHIP FOR REGIONAL
INVASIVE SPECIES MANAGEMENT (SLELO-PRISM)
NEEDS YOUR HELP !

What are Invasive Species ?

The term "invasive species" is used to describe non-native organisms that aggressively compete with, and displace, locally adapted native species. Invasive species can have a serious negative impact on biodiversity, agriculture, recreation, human health and our economy.



Water Chestnut

(Trapanatans)

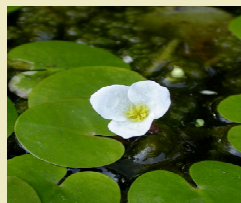
Aquatic Plant



Eurasian Milfoil

(Myriophyllum spicatum)

Aquatic Plant



Frogbit

(Hydrocharismorsus-ranae)

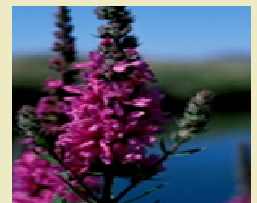
Aquatic Plant



Didymo

(Didymosphenia geminata)

Aquatic Algae



Purple Loosestrife

(Lythrum salicaria)

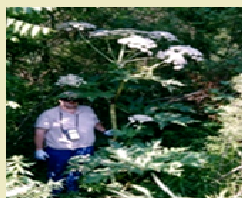
Terrestrial Plant



Swallow-Wort

(Cynanchum louiseae)

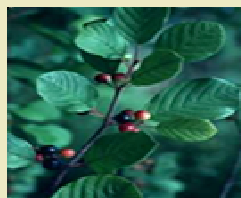
Terrestrial Plant



Giant Hogweed

(Heracleum mantegazzianum)

Terrestrial Plant



Glossy Buckthorn

(Rhamnus frangula)

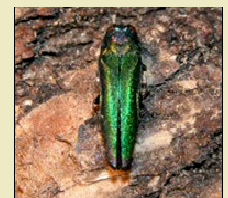
Terrestrial Shrub



Japanese Knotweed

(Polygonum cuspidatum)

Terrestrial Plant



Emerald Ash Borer

(Agrilus planipennis)

Insect

If You See One of the Above
Contact Your Local SLELO
Representative Listed
Below
or Call 1-315-387-3600

**STOP THE
SPREAD**

Sponsored by SLELO-PRISM
www.sleloinvasives.org